



Firthview, Drummie,
Golspie, Sutherland, KW10 6TA

Offers Over £320,000



4



2



2



F

UNDER OFFER

Firthview is located to the south of the village of Golspie on the east coast of Sutherland. A recently extended traditional cottage which now provides 4 double bedrooms (one on the ground floor), 2 shower rooms, 2 sitting rooms, a sun lounge and a new kitchen diner. The property has 2 large workshops and a cabin with outdoor kitchen on an elevated position with views to the sea. The property is surrounded by Scottish woodland and is at the end of a driveway. If viewing this property please follow what3words Not the sat Nav



LOCATION

Getting to Firthview Do Not follow sat nav but best using What3words or looking at the map on this listing

Firthview is located on the outskirts of the village of Golspie along the A9, also known as the famous NC 500 Route. The village of Golspie is close by (less than 1 mile) and has all the local amenities:- primary and secondary schools, pubs, restaurants, doctors, dentists and a sandy beach. Lots of walks on hills, beach and woodland.

CONSERVATORY/ SUN ROOM 9'3" x 7'2"

One entrance to the property is through the decked area and into the conservatory with exposed stonework and views to the trees. The conservatory leads into the kitchen.

KITCHEN 10'9" x 18'6"

The kitchen is newly renovated and has stunning views to the woodland as well as a skylight to allow lots of light into the room. There is an abundance of blue base, wall and larder units with integrated appliances;- dishwasher, 5 ring gas hob, eye level oven and oven/microwave, full height fridge and freezer, sink with boiling water tap., Two larder units. There is seating for 6 people with pendant lights above. There is also a cupboard with the water tank and an exit door leads to the back garden with an enclosed area. At the rear door is a built in shoe storage unit.

SITTING ROOM

A cosy sitting room with a multi fuel burner and dual aspect windows. A door leads through to the front hallway.

UTILITY/CLOAKROOM

A cleverly laid out utility and cloakroom. Worktop with under counter washing machine, tumble dryer and a wash basin. A white w/c and lots of storage.

LIVING ROOM 10'10" x 12'1"

A sitting room which has a door leading to the original hall with access to the first floor and the room is open to behind the stairs which is known as the music room along with understairs storage

BEDROOM 1 13'5" x 10'5"

Bedroom 1 is on the ground floor and located next to a shower room, it overlooks the garden. There is fitted wardrobe and inset shelving ideal for a vanity area.

SHOWER ROOM

The shower room has a shower enclosure with electric shower, wash basin in a vanity unit and w/c.

FIRST FLOOR

Stairs from the hall leads to the first floor and the three bedrooms and shower room. A window allows light to come into the hall from the storage cupboard in bedroom 2.

BEDROOM 2 11'7" x 10'7"

A double bedroom with coombed ceiling and storage wardrobes.

BEDROOM 3 11'7" x 10'7"

A double bedroom with coombed ceiling and storage wardrobes.

BEDROOM 4 11'9" x 10'2"

An addition to the original croft house is this double bedroom along with the shower room. the room has fitted wardrobes and has a picture window and a high window making this a very bright and modern looking room.

SHOWER ROOM 7'7" x 5'4"

A new addition to the property is this modern fitted shower room with underfloor heating, shower enclosure, wash basin and w/c.

SUMMERHOUSE

Located on an elevated position with stunning views out to sea is a cabin that has a log burner and power. To the side is a bar with lift up shutter and to the other side is an open kitchen with sink, dishwasher and worktop, a pizza oven is located to the side and an outside loo shed.

WORKSHOPS & POLYTUNNEL

A polytunnel is in situ and has raised planters. There are two workshops, both with power and light, large doors and entrance doors. Log store and shed for sit on mower.

GARDEN

The house, Firthview, is set in 1.5 acres of garden which has a boundary of woodland. The garden in front of the property is mainly laid to lawn and is easily maintained with the use of a sit on mower. The present owners have created a treehouse and tree swing in the grounds.

ADDITIONAL INFORMATION

Council Tax Band - B

Built 1920 (circa) Extension 1980 1990 2018 and 2021

VIRTUAL TOUR LINKS

360 Tour - <https://www.madesnappy.co.uk/tour/1g171g90a2>

Virtual Tour - <https://youtu.be/p5I88Innglo>

DIRECTIONS TO FIRTHVIEW

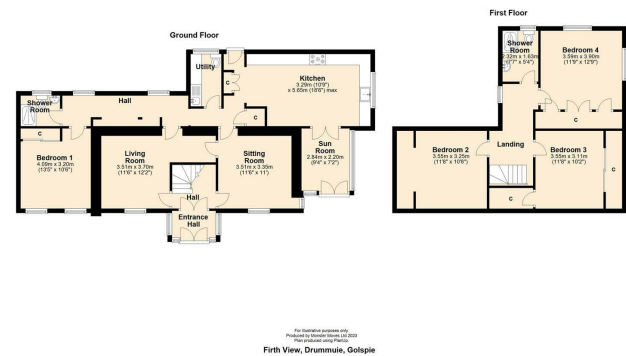
Come along the A9 north towards Golspie. The turning left before Drummie offices is the road to Firthview, If you pass the entrance with the Monster Moves sign please take a left at the Drummie entrance and turn around and back to the Firthview entrance.

What3words [///devooured.range.joys](https://www.what3words.com/devooured.range.joys)

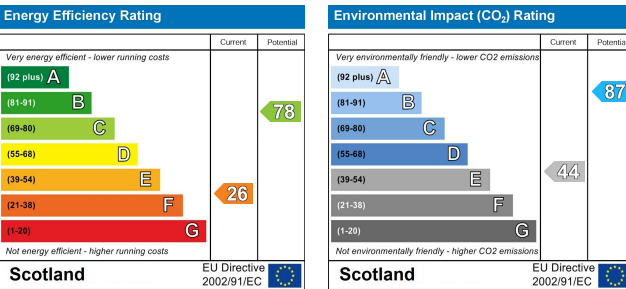
Area Map



Floor Plans



Energy Efficiency Graph







These particulars, whilst believed to be accurate are set out as a general outline only for guidance and do not constitute any part of an offer or contract. Intending purchasers should not rely on them as statements of representation of fact, but must satisfy themselves by inspection or otherwise as to their accuracy. No person in this firms employment has the authority to make or give any representation or warranty in respect of the property.